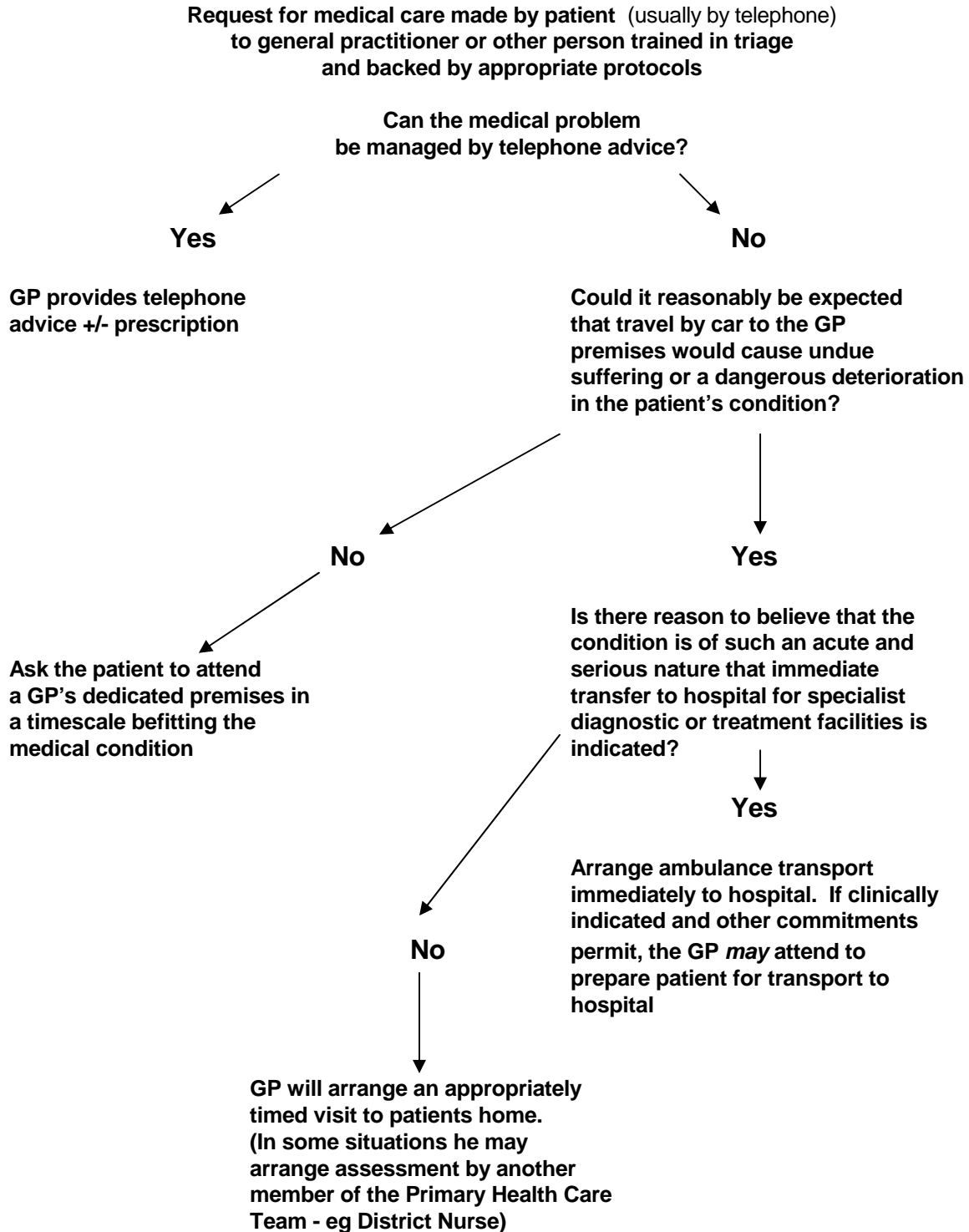


THE STAFFORDSHIRE LMC HOME VISITING GUIDELINES AT A GLANCE



CLARIFICATION AND EXAMPLES OF VISITING GUIDELINES IN ACTION

1. Situation where GP home visiting makes clinical sense and provides the best way to give a medical opinion:

- a. The **terminally ill**
- b. The truly **bedbound** patient in whom travel to premises by car would cause a deterioration in medical condition or unacceptable discomfort

2. Situations where on occasions visiting may be useful.

Where, after initial assessment over the telephone, a seriously ill patient may be helped by a GPs attendance to prepare them for travel to hospital. **That is where a GPs other commitments do not prevent him/her from arriving prior to the ambulance.**

It must be understood that if a GP is about to embark on a booked surgery of and is informed that one of his/her patients is suffering from symptoms suggestive of a myocardial infarct the sensible approach may well to be emergency paramedical ambulance rather than attending personally.

In our urban setting where a paramedic crew are rarely more than a few moments away it would be most unusual for a GP to be able to attend to a patient faster than the paramedic crew.

3. Situations where visiting is not usually required

a. Common symptoms of childhood, fevers, cold, cough, earache, headache, diarrhoea/vomiting and most cases of abdominal pain. These patients are almost always well enough to travel by car. The old wives tale that it is unwise to take a child out with a fever is blatantly untrue. It may well be that these children are not indeed fit to travel by bus, or walk, but car transport is sensible and always available from friends, relatives or taxi firms.

It is not a doctor's job to arrange such transport.

b. Adults with common problems of cough, sore throat, "flu", back pain, abdominal pain are also readily transportable by car to a doctors premises.

c. Common problems in the elderly, such as poor mobility, joint pain, general malaise would also be best treated by consultation at a doctors premises. The exception to this would be in the truly bed bound patient.